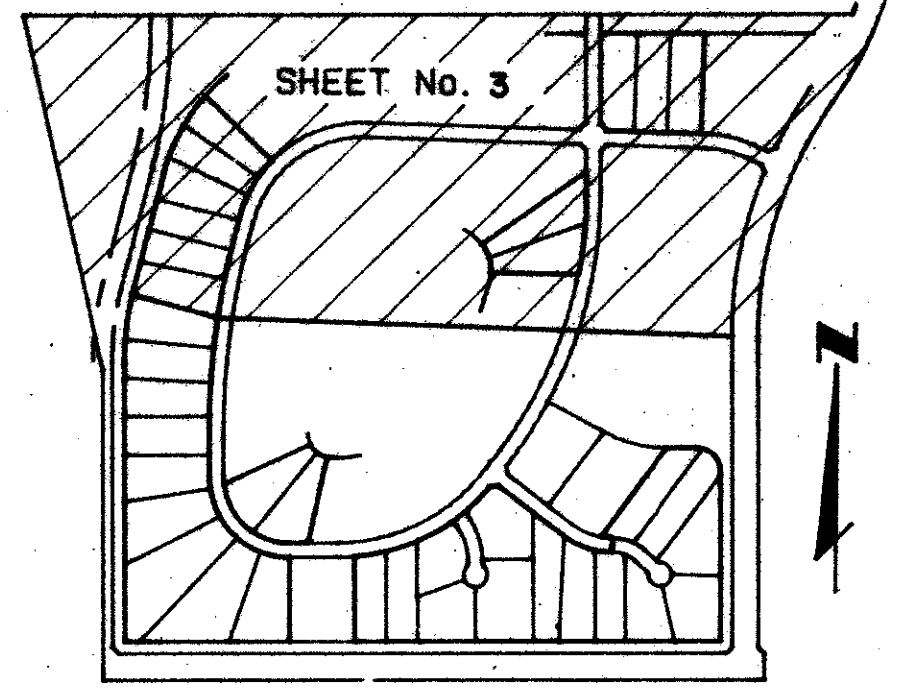


REPLAT OF PORTIONS OF LEXINGTON I OF SHERBROOKE P. U. D.

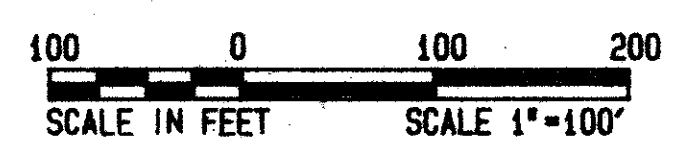
178



KEY MAP
N.T.S.

BEING A REPLAT OF PART OF LOTS 3, 4, 11 THRU 19, 21 THRU 27, 34 AND 43 AND PART OF CALUMET LANE OF LEXINGTON I OF SHERBROOKE - P. U. D. AS RECORDED IN PLAT BOOK 32, PAGES 195 THRU 198, INCLUSIVE, OF THE PUBLIC RECORDS OF PALM BEACH COUNTY, FLORIDA, BEING MORE PARTICULARLY DESCRIBED AS FOLLOWS:
 LYING IN SECTION 6, TOWNSHIP 45 SOUTH, RANGE 42 EAST
 PALM BEACH COUNTY, FLORIDA
 IN FOUR SHEETS SHEET No. 3

GEE & JENSON
 ENGINEERS - ARCHITECTS - PLANNERS, INC.
 WEST PALM BEACH, FLORIDA
 JANUARY 1989



STATE OF FLORIDA
 COUNTY OF PALM BEACH
 This plat was filed for record at _____ M. this _____ day of _____ 1992 and duly recorded in Plat Book No. _____ on Pages _____ and _____
 Clerk Circuit Court
 By: _____ D. C.

PALM BEACH FARMS COMPANY PLAT NO. 3
 BLOCK 36
 P. B. 2, PG. 48

LEXINGTON I OF SHERBROOKE P. U. D.
 P. B. 32, PGS. 195 thru 198

LEXINGTON I OF SHERBROOKE P. U. D.
 P. B. 32, PGS. 195 thru 198

LEXINGTON I OF SHERBROOKE P. U. D.
 P. B. 32, PGS. 195 thru 198

SUBMITTED FOR REPLAT OF PORTIONS OF LEXINGTON I OF SHERBROOKE P. U. D. P. B. 32, PGS. 195-198. SHEET NO. 3. DATE: 1/10/89. DRAWN BY: [Signature]. CHECKED BY: [Signature]. APPROVED BY: [Signature]. JOB NO. 87-550.

TAZ # 743

PET. 76-139A COLLECT

68/178
 0309-008

COMPUTED D. N. LEI/CADD
 DRAWN D. N. LEI/CADD
 CHECKED J.L.D.
 APPROVED [Signature]
 JOB NO. 87-550

MATCH LINE - SEE SHEET NO. 4

REPLAT OF PORTIONS OF LEXINGTON I OF SHERBROOKE

